

FOR LEASE

17400 El Camino Real, Houston, TX
EL CAMINO REAL SHOPPING CENTER,
CLEAR LAKE CITY



PROPERTY INFORMATION

Total Leasable Area: 8,241

Total SF: 41, 783

Lease Price: \$13.20/SF/YR
\$1.10/SF/MO

Modified Gross Lease

Available NOW!

Suite 200: 960 SF
Suite 500: 800 SF

PROPERTY

17400 El Camino Real

- Sufficient parking for 100 vehicles
- Safe cul-de-sac location

COMMENTS

- Near the well-maintained planned Friendswood Development Community of Clear Lake City.
- Located near Johnson Space Center(NASA) and Space Center Houston
- High Traffic Volume
- Convenient location to Nasa Parkway and I-45

FOR MORE INFORMATION:

Gwen Cannon

713.261.9511

Chris Bittinger

832.541.5433

Demographics- 2020

	1M	3M	5M
Population	9,057	63,825	165,784
Average Age	35	37	37
Avg. Income	\$59,788	\$79,525	\$90,432

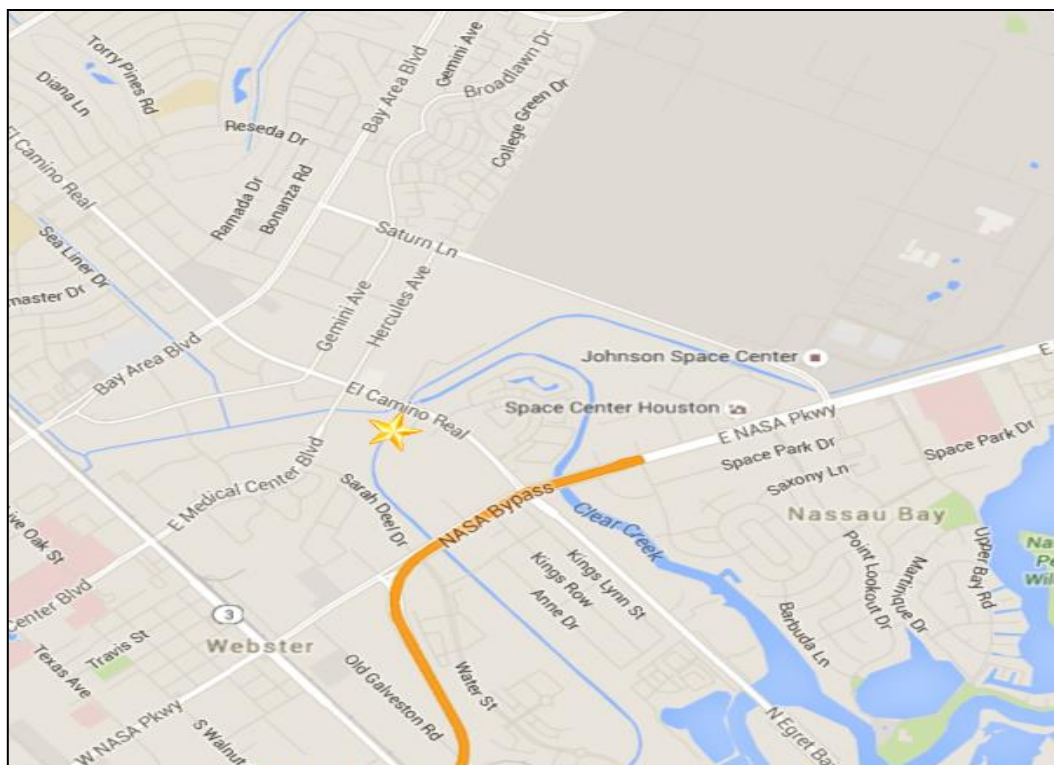
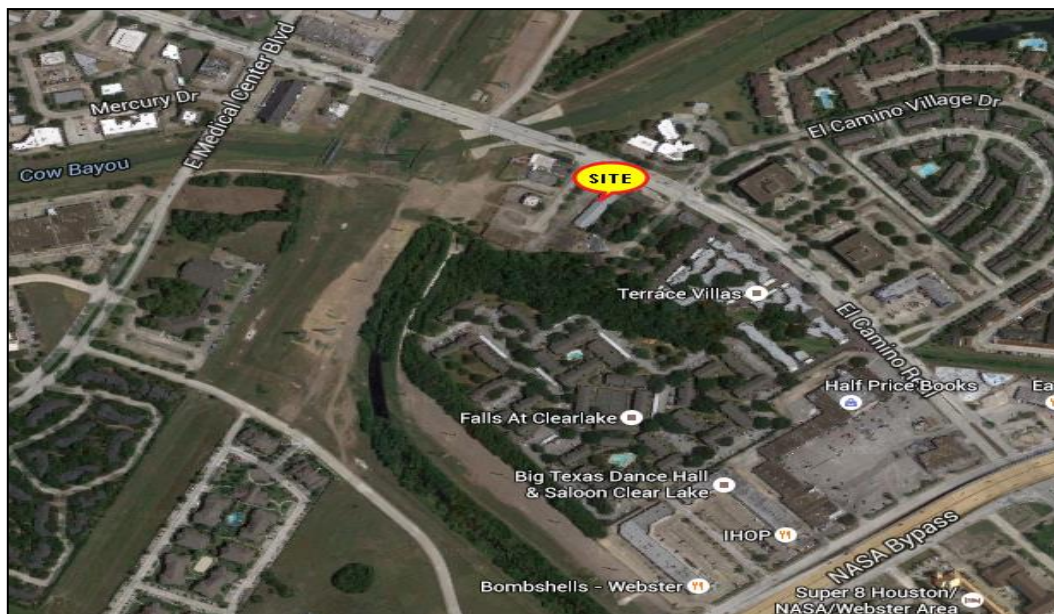
Traffic Counts (CPD): 47,000



www.RutledgeCommercial.com | P.O. Box 580332, Houston, TX 77258
Wayne Rutledge, Broker 832.875.2980

FOR LEASE: EL CAMINO REAL SHOPPING CENTER

17400 El Camino Real, Houston, TX 77058



FOR MORE INFORMATION:

Gwen Cannon 713.261.9511

Chris Bittinger 832.541.5433

www.RutledgeCommercial.com

P.O. Box 580332,
Houston, TX 77258



This information contained herein was obtained from sources believed reliable; however, Rutledge Commercial makes no guarantees, warranties or representations as to the completeness or accuracy thereof. The presentation on this property is submitted subject to errors, omission, changes of price, or conditions, prior to sale or lease, or withdrawal without notice.